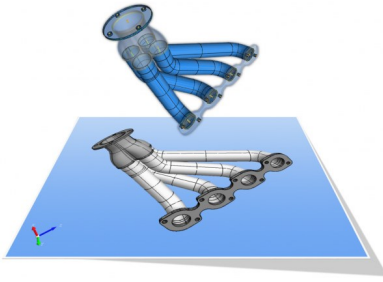


BREAKING THE CAD BARRIER

**VTUBE
STEP**



World-class Model Conversion for Tube Fab

VERSION 3 Datasheet

Version 3 - New Features List

NEW IMPORT ADJACENT BENDS - Now you can import models with adjacent bends with no straight between the bends.

NEW AUTOMATED MULTI-VIEW SOLIDWORKS DRAWINGS - New automated multi-view tube drawings in SOLIDWORKS

NEW COMMUNICATION PROTOCOL - UNISON SVNet

NEW COMMUNICATION PROTOCOL - Schwarze-Robitec SVNet

NEW COMMUNICATION PROTOCOL - YLM SVNet

IMPROVED TRANSFORM (ROTATE) FOR ENTIRE ASSEMBLY - Now you can rotate the entire assembly when one of the parts is transformed in space. Simply make the "Aligned" switch active for every part to transform.

NEW TRANSLATE (MOVE) CONTROL WINDOW - We added a new translate window that lets you move one part or the entire assembly along any of the X, Y, or Z axes. You can make any point 0,0,0. You can move an entire coordinate column of data by any linear distance.

NEW LRA SPINNER CONTROL - The new LRA Spinner control lets you change bender data incrementally and quickly. You jog values and see the changes on the screen immediately.

NEW "Add a Bend" Command - The new pop-up menu command allows you to quickly add a 90-degree bend to the end of the LRA data. Use this with the LRA Spinner to find the entry angles into a coil

NEW IMPORT HEXAGON ISOGEN FILES - New HEXAGON Isogen piping assembly file import

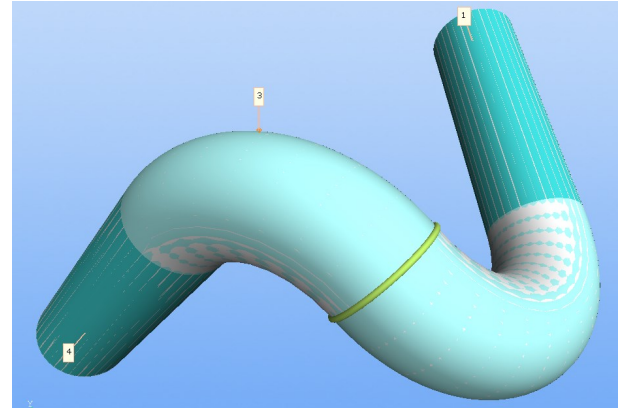
IMPROVED IMPORT DOCS FILE ASSEMBLIES - Rewritten logic for importing DOCS files now recognizes DOCS assemblies.

NEW IMPORT G-Tube GTT FILES - Now you can import legacy G-Tube GTT files to create new VTube-LASER projects.

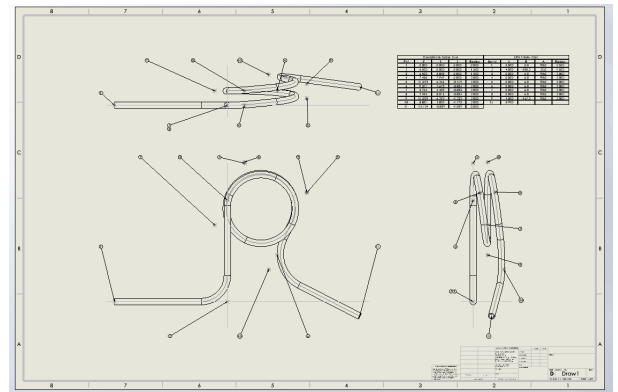
WINDOWS 10 DIALOGS - Customers requested the new Windows 10 style open/save dialogs (rather than the older Windows 7 dialogs).

MATH FORMULA ENTRY - New floating-point edit boxes allow for entry of full math formulas.

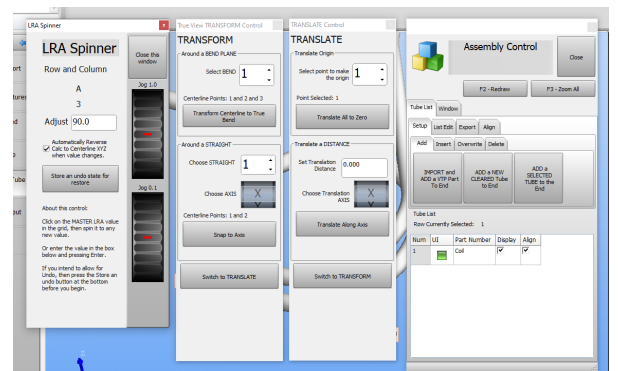
IMPORT ADJACENT BENDS



SOLIDWORKS BUILDER



LRA SPINNER and OTHER CONTROLS



**ADVANCED
TUBULAR**
TECHNOLOGIES, INC

Phone: 248 674-2059
www.advancedtubular.com