

# How to Export Template CSV Files from COMCO Controls

Document Date: August 17, 2021

## Creating Template COMCO CSV Files for Use by VTube

VTube merges its bender data into COMCO CSV files when you create new parts to send to a COMCO control. The template CSV file must have a matching bend count with the new part being sent from VTube.

Therefore, exporting from the COMCO to CSV files is part of the process for sending a new part to the COMCO from VTube-STEP or VTube-LASER. You will need to create a template CSV file from COMCO for each potential bend count that you intend to send to the COMCO from VTube.

These steps show the overall process of creating template CSV files from the COMCO control.

Step 1 – Setup the bender with the correct tools and interference point values.

Step 2 – With that setup, set the correct number of bends. Be sure all the FRB values (both nominal and corrections) are cleared to ZERO.

Step 3 – Export a CSV file of the current setup to the path that VTube also recognizes as the COMCO path (in the COMCO network menu). You can also send these template files to thumb drives.

See the next section for a guide for this process.

## How to Export the Template CSV from the COMCO Control

Step 1 – Exit Auto mode (with the keypad).

Step 2 – Release the operation designation. If a part is assigned for operation, then it is not possible to import data from a CSV that was created by VTube. This is a safety feature on the COMCO control.

In this example, we want to export 272T1200-2018. You can see that it is designated to run in Auto mode. It is necessary to release this part from the designation box.

File (F) Maintenance(M) Communication(C) Help (H)

Folder: 737 File name: 272T1200-2018

**Operation designation**

Alternate operation Change

No.1 272T1200-2018

Number of operations		Pieces counter		File information
	Number of operations	Addition	Reduction	
NO.1	1	+	-	
NO.2	0	+	-	
NO.3	0	+	-	
NO.4	0	+	-	
NO.5	0	+	-	

737 It displays the Working file

	File name	Remark
1	213a1 401 -38	
2	272A1 552-135	
3	272A1 553-81	
4	272T1200-2018	BL 1,125 PD 2,0 WALL,019

Folder: 737, 767, 777, A-300, Folder06, Folder07, Folder08, Folder09, Folder10, MD80

Alteration of folder name

↑ Operation designation  
Release operation designation  
Alteration of file name  
Search working file

272T1200-2018 inch MPa Feed:3.883 Plane:287.12 Bend:359.99 0

See the next screen. The part is now released.

File (F) Maintenance(M) Communication(C) Help (H)

Folder: 737 File name: 272T1200-2018

**Operation designation**

Alternate operation Change

No.1

Number of operations		Pieces counter		File information
	Number of operations	Addition	Reduction	
NO.1	0	+	-	
NO.2	0	+	-	
NO.3	0	+	-	
NO.4	0	+	-	
NO.5	0	+	-	

737 It displays the Working file

	File name	Remark
1	213a1 401 -38	
2	272A1 552-135	
3	272A1 553-81	
4	272T1200-2018	BL 1,125 PD 2,0 WALL,019

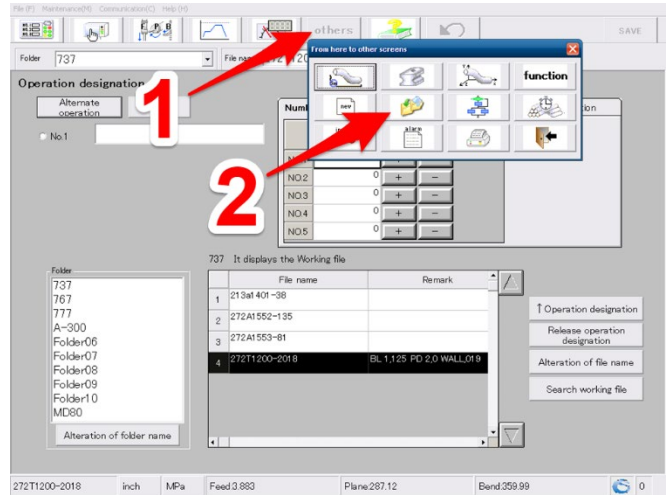
Folder: 737, 767, 777, A-300, Folder06, Folder07, Folder08, Folder09, Folder10, MD80

Alteration of folder name

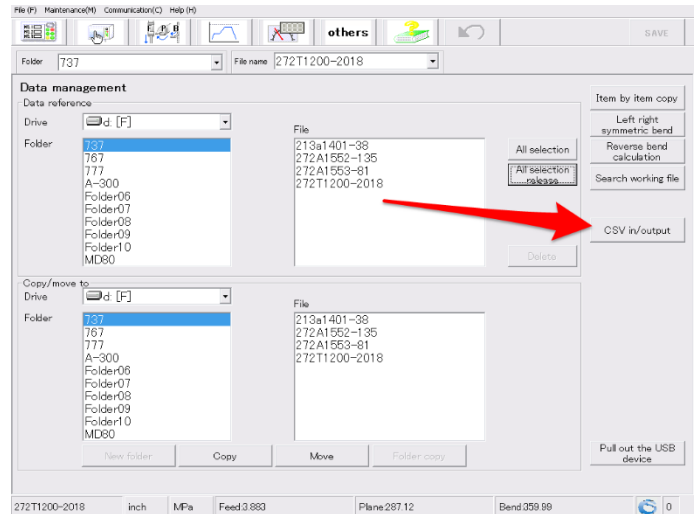
↑ Operation designation  
Release operation designation  
Alteration of file name  
Search working file

272T1200-2018 inch MPa Feed:3.883 Plane:287.12 Bend:359.99 0

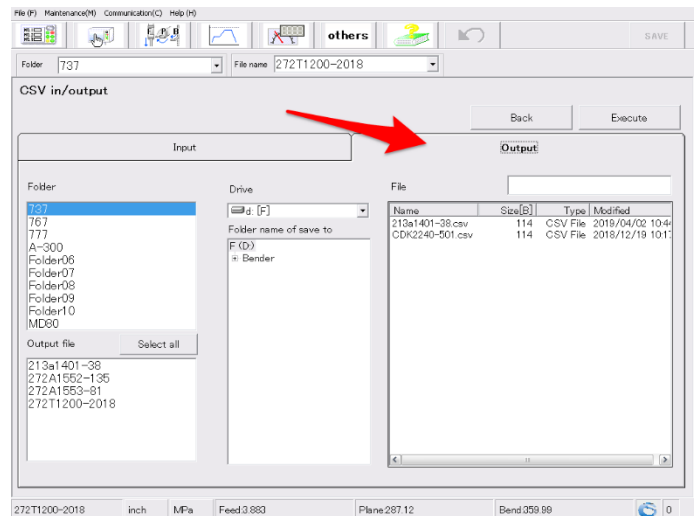
Step 3 – Click on others, then on the folders button.



Step 4 – Click on CSV in/out.

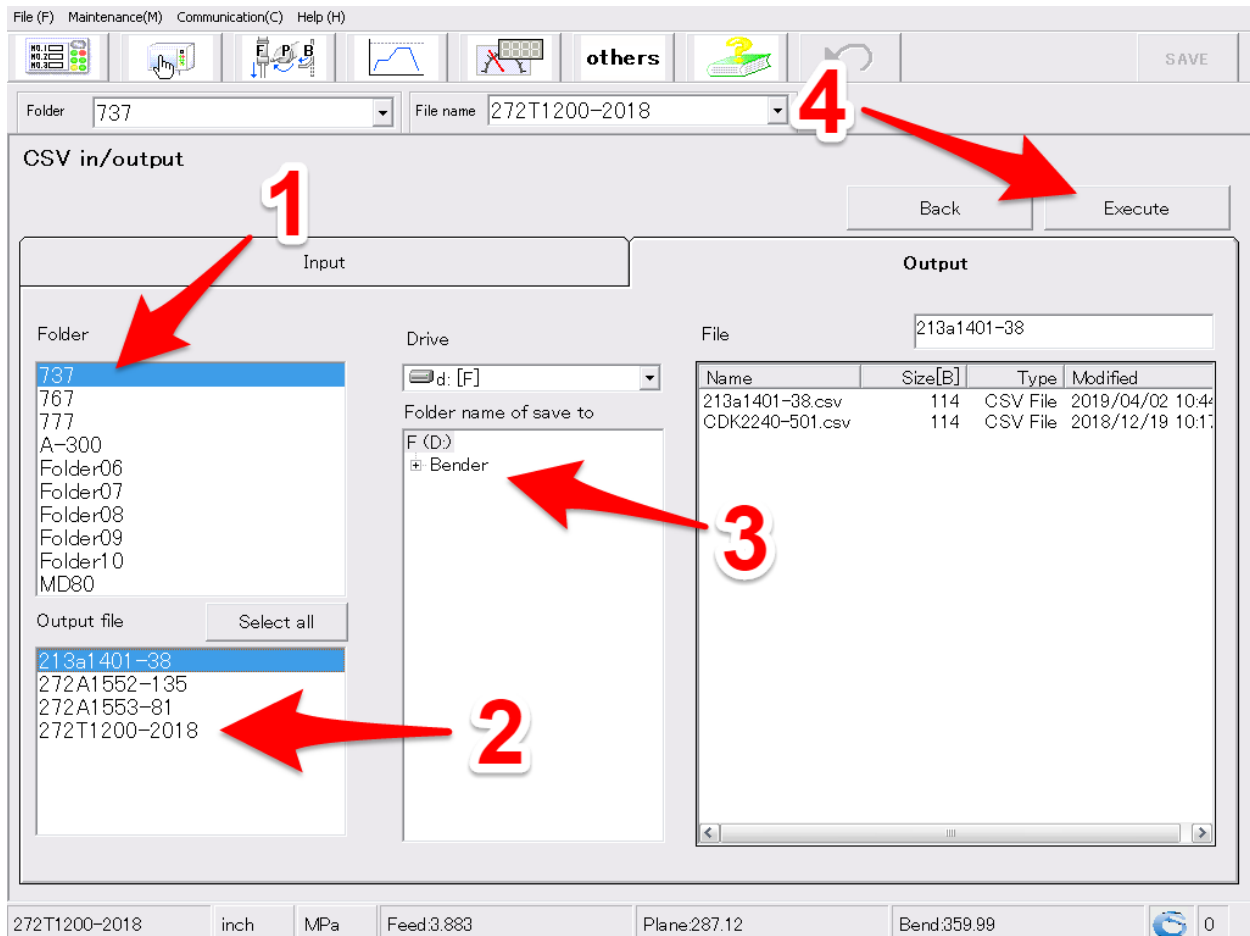


Step 5 – Click on Output.

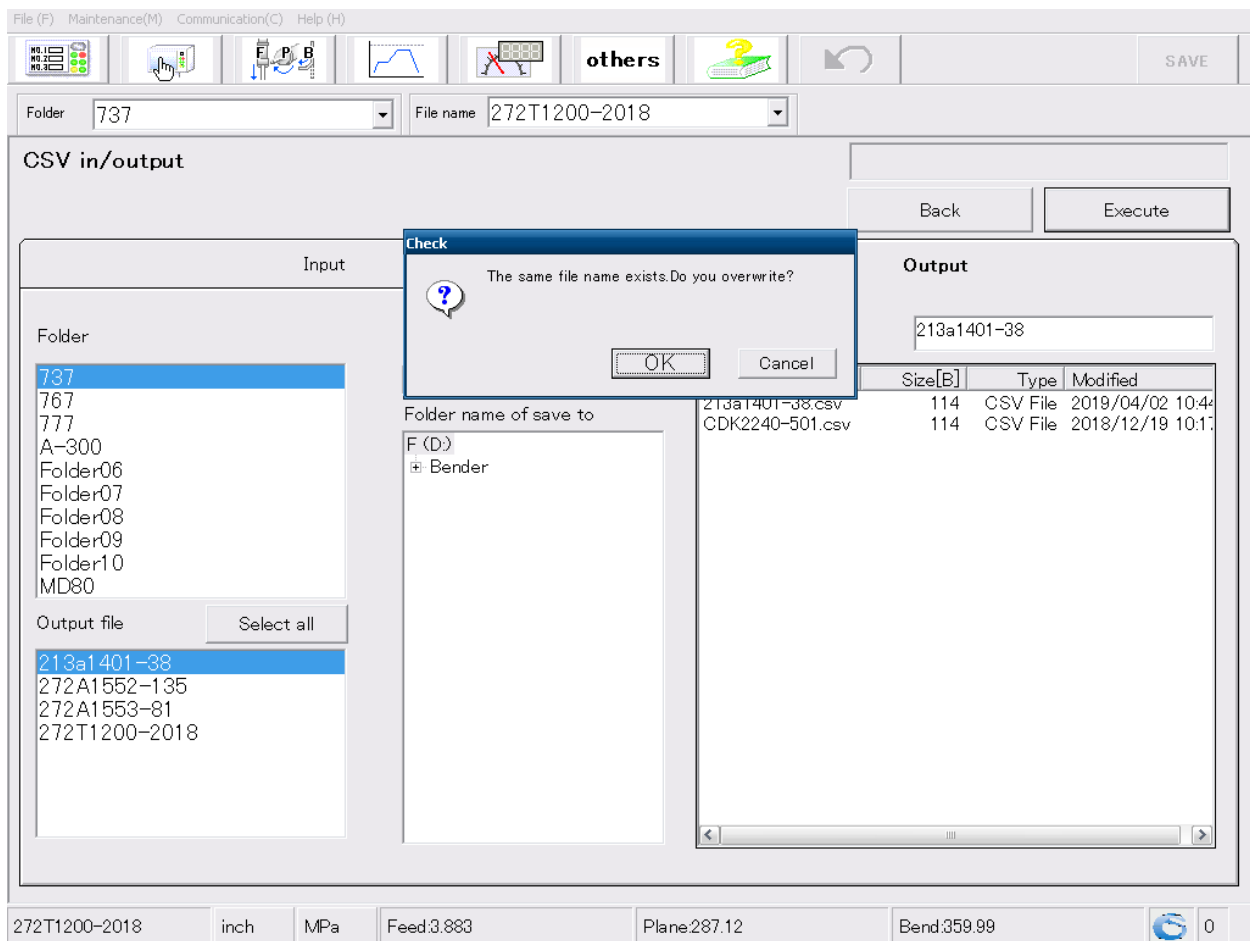


Step 6 – Choose the part to export by following this order of screen presses.

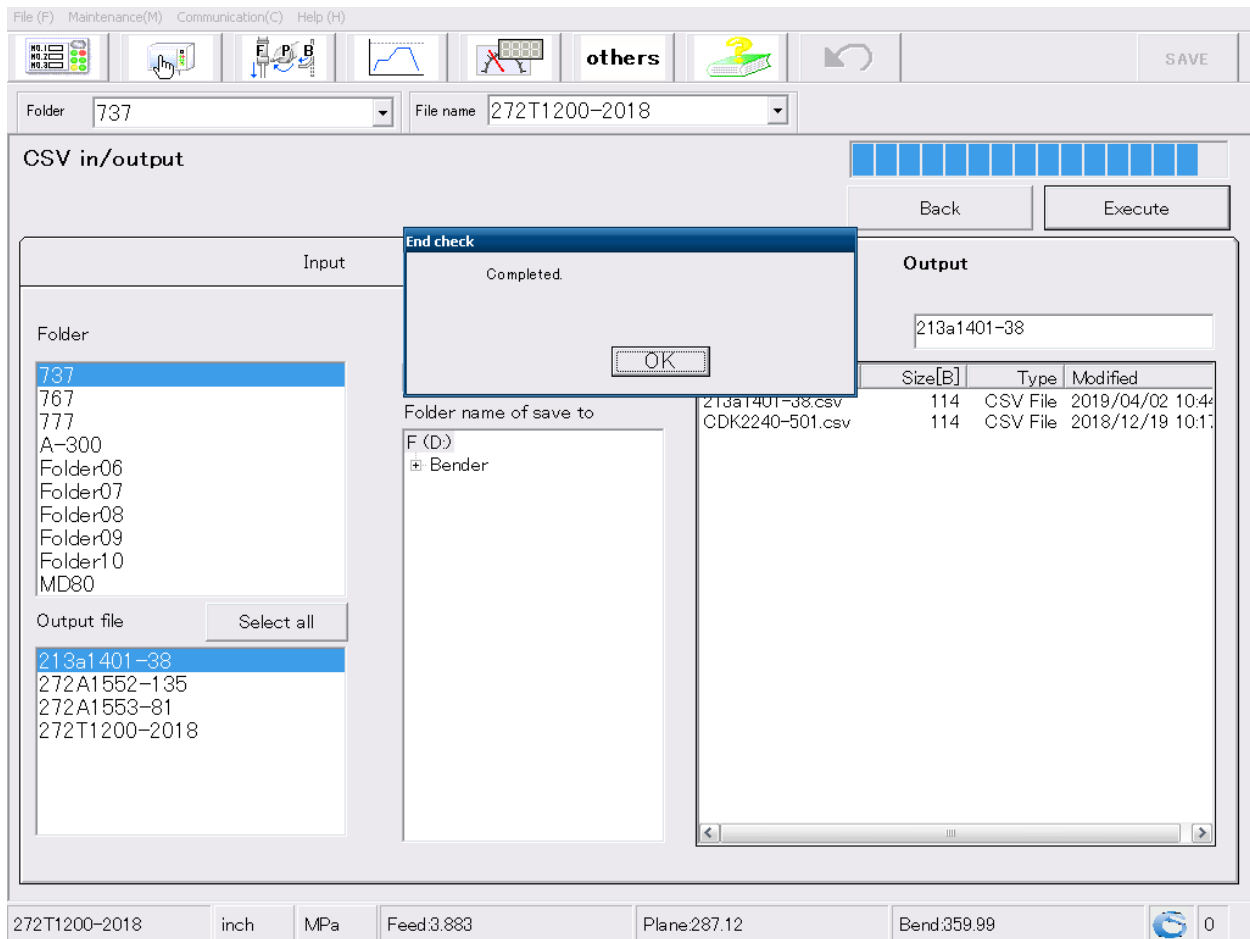
1. Choose the folder.
2. Choose the part.
3. Choose the correct destination drive (the one the VTube can see).
4. Press Execute.



If the CSV file already exists, then overwrite it:



Step 7 – Press OK in the completed box.



How you can to the VTube computer and perform an Export to COMCO CSV from the VTube-STEP screen.

Suggestion for naming of the template files: If your parts use common tooling setup, then you can use a name that indicates how many bends are inside that template – like “1bend.csv”. Of course you can add other notable designations (like radii) to the csv file.