

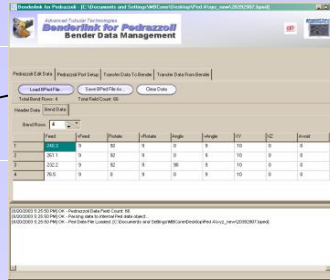
How Benderlink for Pedrazzoli Works

Data Management

This is the **Data Management** module of Benderlink for Pedrazzoli. This program allows complete data management of Pedrazzoli data files that contain Pedrazzoli bender data.

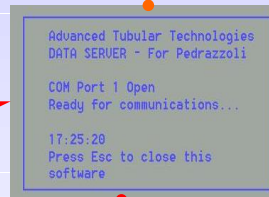
This software can **load, edit, and save** Pedrazzoli part data.

It is often placed on a remote manager's desk for part control.



Data Management

The **Data Management** module can optionally be attached directly to the Pedrazzoli control to SEND and RECALL data through the DATA SERVER for batch file maintenance.



Data Server

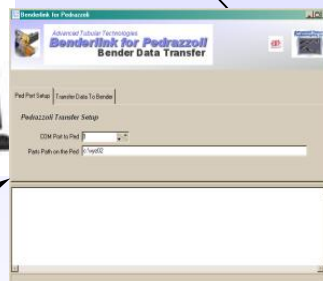
This is the **Data Server** software that runs on the **Pedrazzoli operator station** computer.

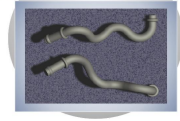
It responds to commands from the other Benderlink for Pedrazzoli Windows programs to receive or send part data.



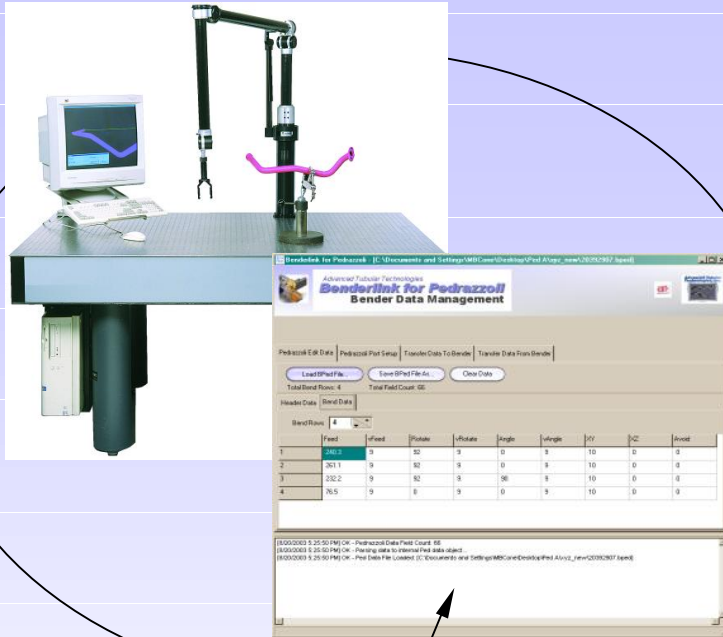
Data Transfer

This is the **Data Transfer** software module of Benderlink for Pedrazzoli. It can read the data files created by the **Data Management** software from a remote server on the network then transfer the data into the Pedrazzoli control through the **Data Server** software.





How Benderlink for Pedrazzoli Works



Measuring Center Corrections Loop

A corrections loop automatically corrects the bender data on a Pedrazzoli bender for fast setup and correction of the bender data.

```
Advanced Tubular Technologies
DATA SERVER - For Pedrazzoli

COM Port 1 Open
Ready for communications...

17:25:20
Press Esc to close this
software
```

Data Server

This is the **Data Server** software that runs on the **Pedrazzoli operator station** computer.

It responds to commands from the other Benderlink for Pedrazzoli programs to receive or send part data.



Data Management and Measuring Centers

The **Data Management** module can be installed and run from Supervision-based measuring centers like ROMER and MM5000 to enable correction loops.