

# CNC BENDER



## TRAINING SERVICE



## On-site Training Service for CNC Bender Learn CNC Bender in 1 Day

### BASICS - Learn the USER INTERFACE From Ground Up

We can get you started quickly by making the user interface - the screen and the physical buttons - easy to understand.

### FILE SYSTEM - PARTS, TOOLS, and More

We will teach you how to store part files, tool files, master part files, and custom processlist files. If you're interested, we will show you where the parts are stored on the CNC Bender hard drive. You can even change the location of part storage using a few commands.

### BENDER DATA - Understanding OPTIONS and PROCESS LISTS

What are they? Why does CNC Bender build them? How can you make custom process lists to run special warm-up motion? We show you answers to all of these questions.

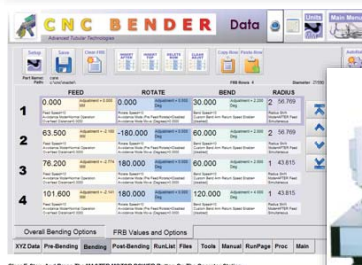
### JUMP-START your knowledge of CNC Bender Software



### BENDERLINKING - Understanding CORRECTIONS LOOPS with MEASURING CENTERS

We can show you how to effectively setup and use Benderlink for communications with measuring centers through a network in order to bring your part into conformance with your master data.

## BENDERLINK



### EXPERT TRAINING - The DEVELOPERS are the Teachers

We offer training by the developers of our software - so you learn from the software experts.



### KEEP BENDING - Learn RECOVERY Strategies

Imagine this scenario: A lift-truck fork just crashed through your CNC Bender screen. Can you recover quickly to keep bending? We can show you how to install CNC Bender software to any Windows 2000 or XP computer in order to be bending again in just a few minutes.



### DIAGNOSTICS - Learn How to Effectively TROUBLESHOOT

Learn how to use the CNC Bender software diagnostic tools to troubleshoot problems around the bender.



14515 Mackey Road, Suite 202  
Holly, MI 48442  
Telephone: 248.674.2059  
Facsimile: 248.724.0807  
www.advancedtubular.com