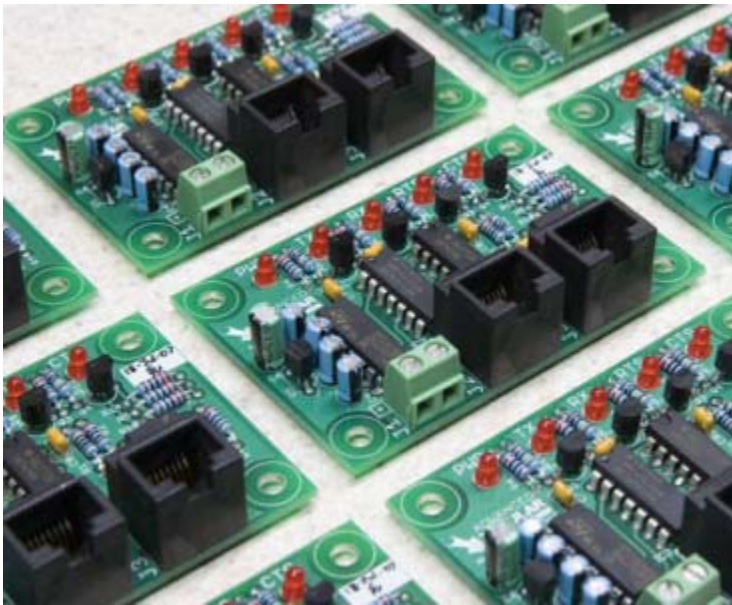


# CB-EL1 CURRENT LOOP

## Communications Board for Eaton Leonard

This is the Advanced Tubular Technologies communications board designed to communicate with all VELOG, EL-2000, and Premier bender controls.



This board allows us to communicate with any of the three Eaton Leonard bender models using our Benderlink for Eaton Leonard software. This software is used for offline editing of all Eaton Leonard data, storage of Eaton Leonard data, and measuring center communications.

We also use this board in our Benderlink Ethernet Module that allows wired or wireless communications using Ethernet protocols.

We offer this board as a direct replacement to the boards in the Premier controls. (EL-2000 and Velog controls have this electronics built-in to the computer boards.)

# CB-EL1 CURRENT LOOP



## EL Vector Tube Data Center Side or EL Bender Side

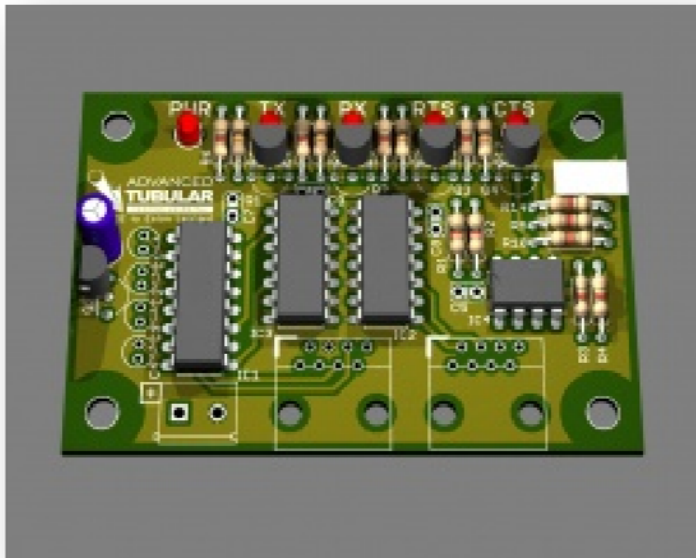
The board can be set using jumpers to operate on either side of the connection - either as a BENDER or as a MEASURING CENTER.

This means that the board can be used to connect non-Eaton Leonard benders to Laservision for communicating with the standard legacy Eaton Leonard protocol.\*

## Voltage Boost

The electronic protocol is referred to by Eaton Leonard as "current loop".

The protocol has been used for several decades and is still one of the standard ports provided on the Eaton Leonard measuring centers. It's been around for a long time and it still works great.



\*Note: This board makes an electrical connection to Eaton Leonard devices to allow for communications. It does not perform the actual transfer of data. Additional software is required for communications.

## Board Features

There are several features and improvements in our board design:

1. The board requires only a single +5 volt power (The original design requires both +15 volt, -15 volt, and +5 volt power.)
2. The simplified electronic design allowed for size reduction to 1/3<sup>rd</sup> the original size or the standard Eaton Leonard board.
3. This board includes LED indicators: Indicates power, transmission, and reception.
4. This board includes built-in current reversal protection. Reversing the power polarity will not destroy the board.
5. This board uses screw terminals for power connection
6. The communications connectors are easy-to-use RJ45 receptacles.
7. The board is certified RoHS compliant (no lead solder).

## For More Information, Contact:

**Advanced Tubular Technologies, Inc.**

2548 Campbellgate Drive

Waterford, MI 48329

Telephone: 248 674-2059

Facsimile: 248 562-3134

Web: [www.advancedtubular.com](http://www.advancedtubular.com)

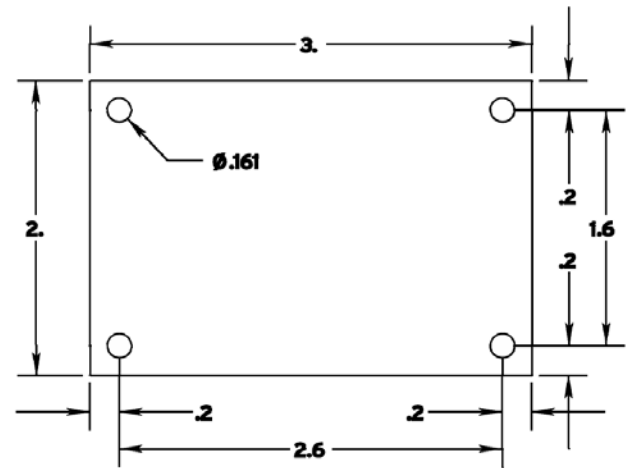
E-mail: [sales@advancedtubular.com](mailto:sales@advancedtubular.com)

# CB-EL1 CURRENT LOOP



## Board Dimensions

This board is 1/3<sup>rd</sup> the size of the original Eaton Leonard board. See the dimensions (in inches) in the image on the right.



## Built in LED Indicators

LED	LED Description
Power	Indicates power is ON
TX	Output signal indicating data is being sent to the other computer
RX	Input signal indicating data is being received from the other computer
RTS	Output signal indicating the local computer is ready to receive data
CTS	Input signal indicating local computer is cleared to send data



## Power Requirements

State	Current
Idle	76.6 mA
Communication	192.2 mA

## For More Information, Contact:

**Advanced Tubular Technologies, Inc.**

2548 Campbellgate Drive

Waterford, MI 48329

Telephone: 248 674-2059

Facsimile: 248 562-3134

Web: [www.advancedtubular.com](http://www.advancedtubular.com)

E-mail: [sales@advancedtubular.com](mailto:sales@advancedtubular.com)