

BENDERLINK



ETHERNET MODULE for PINES TS-2000



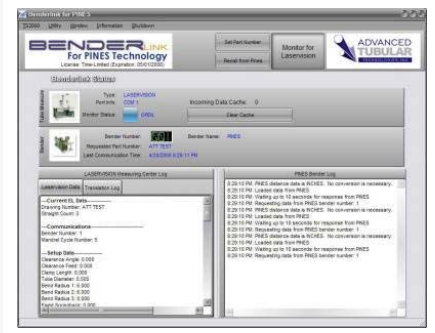
Connect a **PINES** to a **VECTOR 1**
100% Compatible with Eaton Leonard



ATTACH PINES TS-2000
controls to Eaton Leonard
Vector Measuring Centers

PINES to VECTOR 1 -
Combined with Benderlink
for PINES, this module
makes the TS-2000 appear
as an Eaton Leonard control
to the Vector 1.

BENDERLINK For PINES Technology



Benderlink for PINES is software that converts
PINES data into Vector 1 data. It is installed on the
TS-2000 control and works with the control
software for communication with Eaton Leonard
measuring centers.



14515 Mackey Road, Suite 202
Holly, MI 48442
Telephone: 248.674.2059
Facsimile: 248.724.0807
www.advancedtubular.com