

# BENDERLINK

**AICON TubelInspect**  
3D Systems

and

**BENDERLINK  
for BLM**

Software for enabling communications between **AICON TubelInspect** and **BLM VGP3D benders**



**CORRECT BLM VGP3D Benders with AICON TubelInspect**

Benderlink works together with AICON to correct BLM benders...

**BENDERLINK  
for BLM**



**WORKING Together**

AICON TubelInspect calculates corrections data, requests data from the BLM bender through Benderlink for BLM, corrects and returns the data, then allows the operator to merge the new data with the BLM data file on the VGP3D control to adjust the bender.

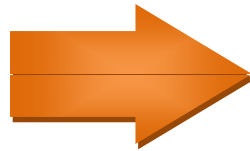
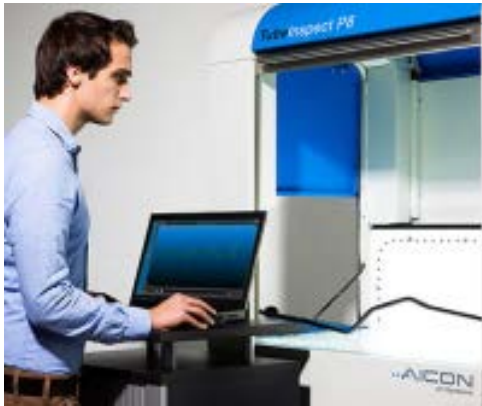
# BENDERLINK

## SEND CORRECTIONS Data

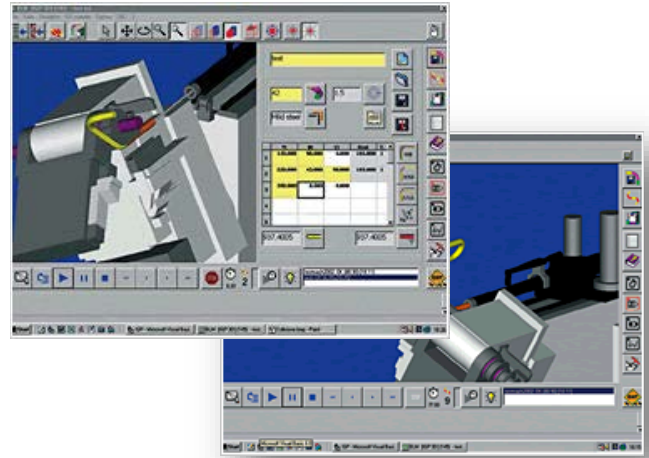
Corrections data is sent directly from the AICON to the Benderlink for BLM software using the built-in Supervision Network protocol.

## BENDER NETWORK System

Setup and manage a network of up **99 BLM benders** to connect through the a computer network.



## BLM VGP3D Software



## For More Information

Learn more about Benderlink for BLM at [https://www.advancedtubular.com/blink\\_blm.htm](https://www.advancedtubular.com/blink_blm.htm)

Pricing details are available online at our [online store](#).

## Advanced Tubular Technologies, Inc.

2548 Campbellgate Drive

Waterford, MI 48329

Telephone: (248) 674-2059

Fax: (248) 690-2396

Web: [www.advancedtubular.com](http://www.advancedtubular.com)

E-mail: [support@advancedtubular.com](mailto:support@advancedtubular.com)

Connection is made through standard Windows network cabling or WiFi.

